



Smarter Smaller

IoT DATA LOGGER
Safe • Stable • Reliable



Elitech Technology, Inc.
Tel: +1 408 898 2866
Email: sales@elitechus.com
Add: 2528 Qume Dr, Ste 2 San Jose, CA 95131, United States

Elitech (UK) Limited
Tel: +44 203 645 1002
Email: info@elitech.uk.com
Add: Unit 13 Greenwich Centre Business Park 53
Norman Road London SE10 9QF

Elitech Brasil
Tel: +55 51 3939 8634
Email: comercial@e-elitech.com
Add: R. Dona Rosalina, 90-Igara, Canoas-RS,
92410-695, Brasil

Jiangsu Jingchuang Electronics Co., Ltd
Tel: +86 516 6890 2808 +86 516 6890 2892
Email: sales@e-elitech.com
Add: No.1 Huangshan Rd, Tongshan Economic
Development Zone, Xuzhou, Jiangsu, China

Elitech®

Innovation Preceding All



About Us

Elitech Technology, Inc.

Elitech is headquartered in San Jose, California, USA and has subsidiaries in China, UK and Brazil with agents around the world. We have designed and manufactured all kinds of cold chain data logger and monitoring system for 25 years. Our advanced 30 000 m² manufacturing plant in Jiangsu, China and new 200,000 m² plant make the fast delivery possible on large order.

More than 10 million data logger products are sold every year to over 100 countries around the world. Our 500 m² professional testing laboratory has been used to guarantee the quality of every Elitech product and the transportation risks of very stage are under control for our global partners in cold chain related products and services.

In addition, we design and manufacture private label products for large OEM or ODM customers and distributors. Designs are based on our technologies or technologies developed specifically for unique customers.

R&D Center



International Certification



FDA

CE

RoHS

System Certification



Production Center



Test Laboratory



Table of CONTENTS



Every Link of Cold Chain

Elitech iCold

1-6

IoT Data Logger Series

7-16

Data Logger Series

17-30

Elitech iCold®

Elitech software focuses on cold chain data management and analysis. It helps users to comply with the local industry standards and regulations, and improve cold chain quality and performance. Elitech software provides real-time monitoring, parameter configuration, alarm notification, data analysis, report download and other functions that can meet various requirements in different applications.

Cloud Platform

Elitech iCold®



Main Functions

- Real-time data monitoring
- Emails warning and alarm
- Historical data record and query, data analysis report export
- Electronic signature and endorsement for FDA CFR 21 Part 11

Elitech Geo



Main Functions

- Data and location query per S/N
- Data report generated based on route settings and report sharing supported
- Alarm emails sent via real-time uploaded data



Software(PC)

ElitechLog



Main Functions

- Export data and generate analysis reports
- Data analysis in parallel for multiple devices
- Electronic signature for FDA CFR 21 Part 11
- Data sharing on Cloud with Bluetooth data logger

Elitech iCold®

Elitech iCold is a cloud-based remote accessible platform. It is compatible with RCW series products to realize real-time monitoring of cold chain data, automatic alerts and notifications, online data analysis and management. iCold helps users to achieve effective management of every step of cold chain and immediate assessment compliance. It complies with FDA CFR 21 Part 11 requirements and supports iOS and Android apps.

PC

Detailed Functions

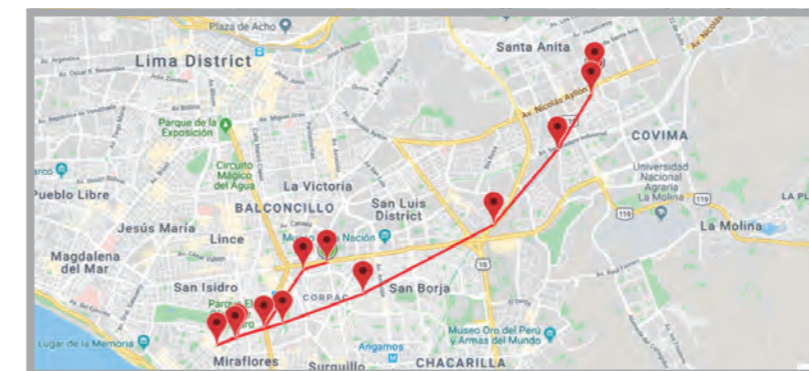
• Real-Time Monitoring

Take control of goods information anywhere at any time, including temperature, humidity and real-time location.



• Track Monitoring

Generate the device's track and routes in the time period according to its location information.



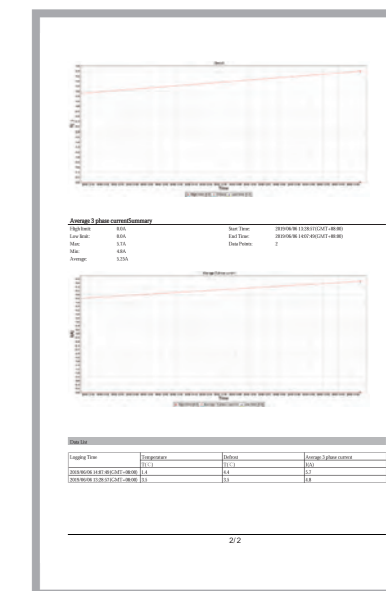
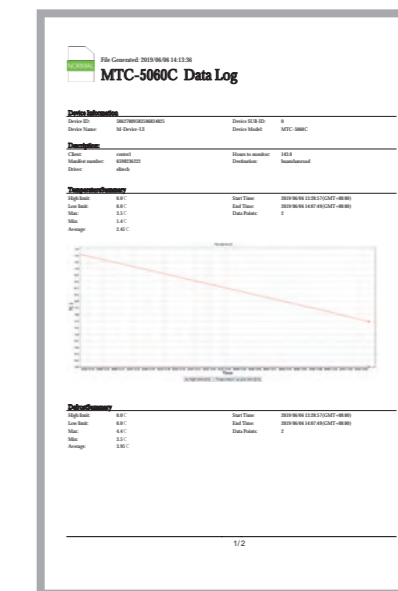
• Alarm & Notification

Temperature and humidity alarms will be sent to relevant accounts via email and app. Users can also subscribe to temperature and humidity information.



• FDA Data Analysis Report

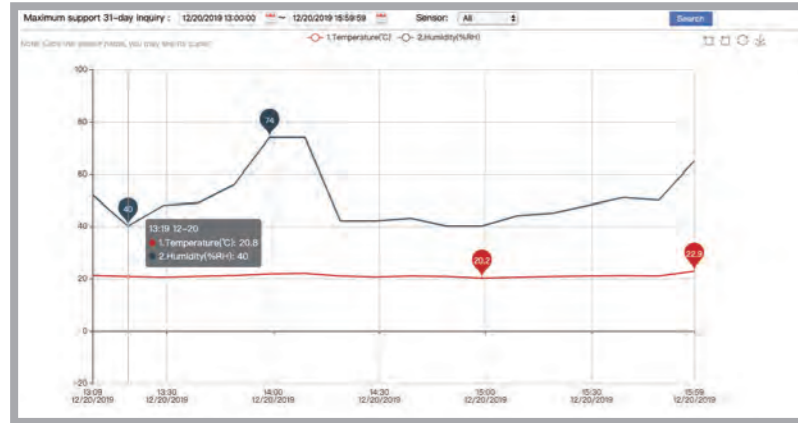
Comply with FDA and ensure compliance. Quickly generate temperature and humidity data analysis report that includes device and trip information, temperature and humidity list.



History Query & Download

Historical data record and query, data analysis report export. Support historical data query, graph analysis and export to multiple formats such as EXL and PDF.

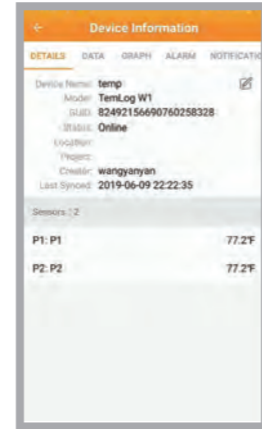
Logged Time	Temperature	Humidity	Alarm	Description
2019-12-20 15:58:00GMT-05:22:9C	50%RH	Normal		
2019-12-20 15:49:00GMT-05:21:0C	50%RH	Normal		
2019-12-20 15:39:00GMT-05:21:1C	57%RH	Normal		
2019-12-20 15:29:00GMT-05:21:0C	48%RH	Normal		
2019-12-20 15:19:00GMT-05:20:8C	49%RH	Normal		
2019-12-20 15:09:00GMT-05:20:8C	44%RH	Normal		
2019-12-20 14:59:00GMT-05:20:2C	40%RH	Normal		
2019-12-20 14:49:00GMT-05:20:8C	40%RH	Normal		
2019-12-20 14:39:00GMT-05:20:6C	43%RH	Normal		
2019-12-20 14:29:00GMT-05:20:6C	42%RH	Normal		
2019-12-20 14:19:00GMT-05:21:0C	42%RH	Normal		
2019-12-20 14:09:00GMT-05:22:0C	74%RH	Normal		
2019-12-20 13:59:00GMT-05:21:8C	74%RH	Normal		
2019-12-20 13:49:00GMT-05:21:2C	58%RH	Normal		
2019-12-20 13:39:00GMT-05:20:9C	49%RH	Normal		
2019-12-20 13:29:00GMT-05:20:5C	48%RH	Normal		
2019-12-20 13:19:00GMT-05:20:8C	40%RH	Normal		
2019-12-20 13:09:00GMT-05:21:2C	52%RH	Normal		



APP

Real Time Monitoring

Check device data and status anywhere and anytime.



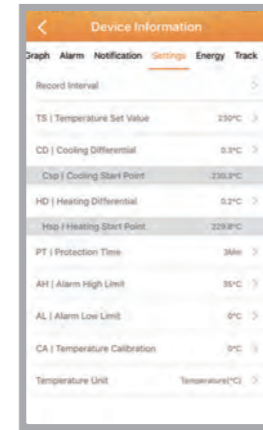
Data Query & Printing

Support historical data query, graphic analysis and data report printing via Bluetooth printer.

Record Time	P1	P2
2019-06-09 22:22:35	77.2°F	77.2°F
2019-06-09 22:21:35	77.2°F	77.2°F
2019-06-09 22:20:36	77.2°F	77.2°F
2019-06-09 22:19:35	77.2°F	77.2°F
2019-06-09 22:18:35	77.2°F	77.2°F
2019-06-09 22:17:36	77.2°F	77.2°F
2019-06-09 22:16:35	77.2°F	77.2°F
2019-06-09 22:15:36	77.2°F	77.2°F
2019-06-09 22:14:35	77.2°F	77.2°F
2019-06-09 22:13:37	77.2°F	77.2°F
2019-06-09 22:12:35	77.2°F	77.2°F

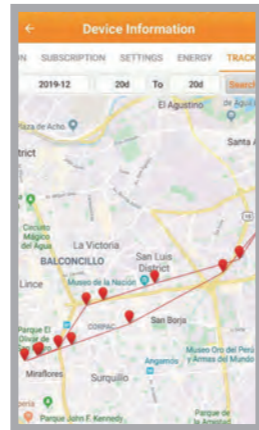
Parameter Settings

Configure device parameters remotely based on cargo shipments and storage.



Location & Track

Generate the device's track and routes in the time period according to its location information.



Elitech Geo

Designed for logistics applications, Elitech Glog platform works with the GLOG cargo tracker to monitor and manage temperature and humidity status, location information, and hazard activity alarms for in-transit shipments, and to export data report and push emails. Elitech Geo eliminates the complexity of in-transit tracking and provides global visibility of shipments in real time.

PC

Detailed Functions

Data Report & Email

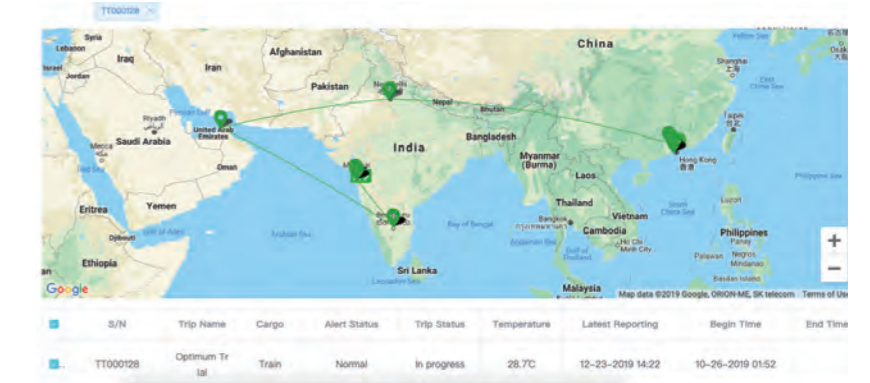
Generate a trip-based data report including device, trip information and temperature, which can be sent by email.



Time	Temperature	Humidity	Alarm
2019-12-20 15:58:00	22.9	50	Normal
2019-12-20 15:49:00	21.0	50	Normal
2019-12-20 15:39:00	21.1	57	Normal
2019-12-20 15:29:00	21.0	48	Normal
2019-12-20 15:19:00	20.8	49	Normal
2019-12-20 15:09:00	20.8	44	Normal
2019-12-20 14:59:00	20.2	40	Normal
2019-12-20 14:49:00	20.8	40	Normal
2019-12-20 14:39:00	20.6	43	Normal
2019-12-20 14:29:00	20.6	42	Normal
2019-12-20 14:19:00	21.0	42	Normal
2019-12-20 14:09:00	22.0	74	Normal
2019-12-20 13:59:00	21.8	74	Normal
2019-12-20 13:49:00	21.2	58	Normal
2019-12-20 13:39:00	20.9	49	Normal
2019-12-20 13:29:00	20.5	48	Normal
2019-12-20 13:19:00	20.8	40	Normal
2019-12-20 13:09:00	21.2	52	Normal

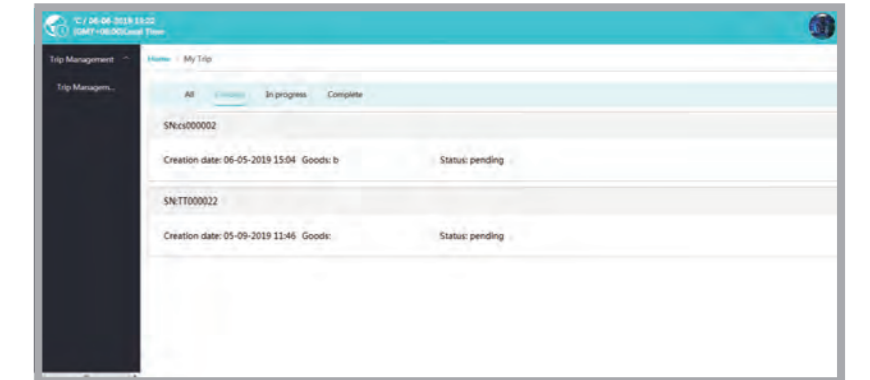
Traceability & Monitoring

Automatically upload the temperature, location and cargo's (unpacked) status. Monitor cargo's real-time status via S/N.



Multiple Shipment Management

Query the status of all shipments under the user account for view and management.



Warnings & Notifications (To be developed)

Temperature and humidity alarm and abnormal status of goods will be sent to the relevant account via email.

APP

• Multiple Shipment Management

Query the status of all shipments under the user account for view and management.

• Traceability & Monitoring

Automatically upload the temperature, humidity and unpacked status of cargo shipments, directly check and manage data via app.



• Location & Routes

Display shipments' instant and historical locations.

• Trip Configuration

Scan the QR code to configure logistics information, cargo temperature requirements and alarm contacts, which is simple and efficient.



ElitechLog

ElitechLog is compatible with RC/LogEt series data loggers. It supports parameter settings, data download, report generation and export, and helps to judge the compliance and effectiveness of shipments in the logistics process. The LogEt series (Bluetooth-enabled) supports data storage on Cloud with Elitech app. It complies with FDA CFR 21 Part 11 requirements and supports Win and MAC versions.

PC

Detailed Functions

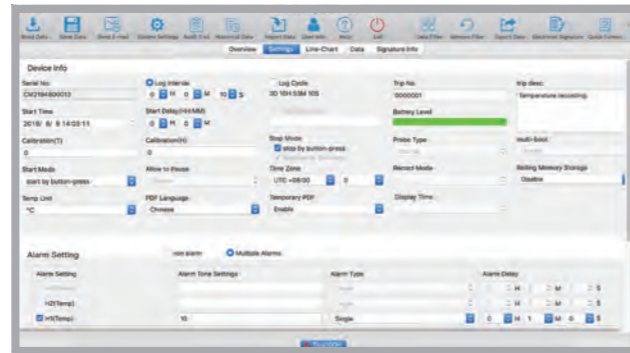
• Statistics

Read the current logger's status and parameters. Summarize and display the status information (alarm value, maximum and minimum value, start time, stop time, etc.).



• Parameter Settings

Read the logger's parameters and synchronize the current or latest parameters settings to the page display, or set the parameters manually and save to the logger.



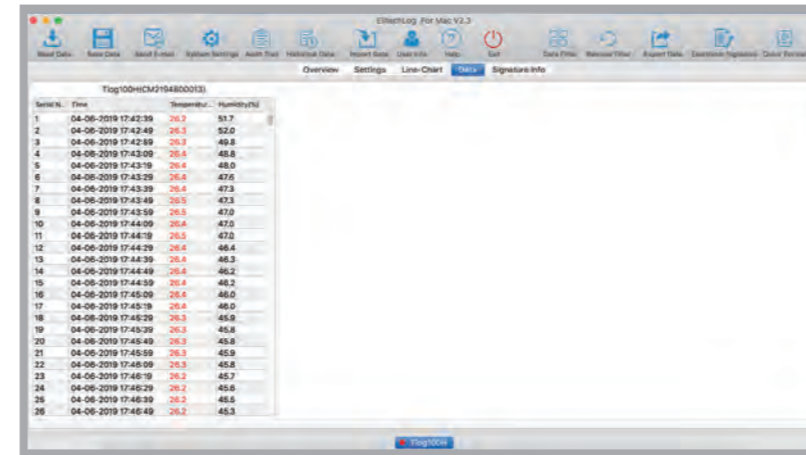
• Graph

Display the selected or historical data in graph. Up to 10 data can be displayed in the graph simultaneously, it is convenient for users to compare temperature and humidity changes of multiple curves. The graph supports stepless zooming and dragging, and user can click on the button in the upper left corner of the graph to zoom in, zoom out and drag the curve.



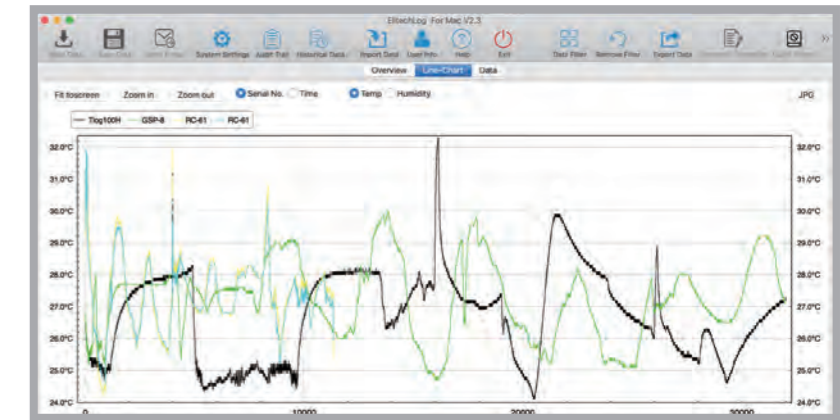
• Data List

Display the selected or historical data in list. It can highlight the over limit data in different colors or compare the multiple loggers data - up to 10 loggers can be listed at the same time.



• Multiple Routes Graph

Display graph & data analysis for multiple routes.



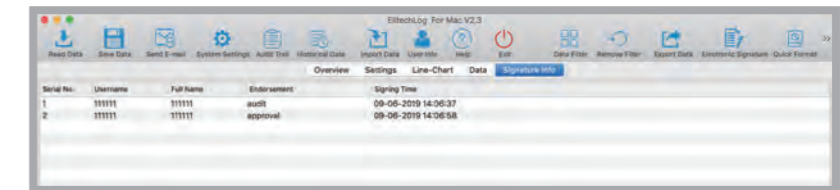
• FDA Log

Display and trace the data in compliance with FDA standards, including account (user login, logout, edit, lock), endorsement (unlock, add, edit, delete and modify), data (read, save, import, and export), and the software system modification, etc.



• Endorsement

Display and trace user's endorsement on the current data, including time, content, endorsement account information, etc.



IoT Data Logger



Technical Specifications

Temperature Measurement Range	-30°C to 55°C	Resolution: 0.1°C
Accuracy	0.5°C/0.9°F (-20°C~40°C) ; 1°C/1.8°F (others)	
Sensor	Internal NTC temperature sensor and light sensor	
Battery Life ¹	30 days, Room temperature	
Start Delay ²	30 minutes (customizable)	
Logging Interval ³	5 minutes (customizable)	
Upload Interval ⁴	60 minutes (customizable)	
Shelf Life	1 year stored at room temperature	
Storage Temperature	+15°C~30°C	
Protection Grade	IP65	
Communication interface	2G 3G 4G	

¹ Battery Life: The estimated operation days of the logger(based on certain conditions).
² Start Delay: After start delay time elapses, the activated logger will start logging.
³ Logging Interval: The interval between two readings after the logger starts logging.
⁴ Upload Interval: The interval between two readings that being uploaded to the Cloud.

Software:
 Elitech Geo
 Page: 4-5

IoT Data Logger Glog 2 Series

- 4G
- 3G
- 2G

Overview

Glog 2 Series is a single-use data logger that records real-time temperature, position and illumination. Quickly started by pulling out battery insulator strip that ensure logistics efficiency and quality.

Functions

- Easy to activate, quickly create shipments for monitoring
- Check temperature and position in real-time through S/N
- Light sensor to determine violation door opening operations during transportation
- Auto email alert in case of over temperature limit
- Download PDF and Excel report from Elitech Glog
- Battery rechargeable, shelf life up to 2 years



IoT

IoT Data Logger
RCW-360



Software:
Elitech iCold
Page: 2-3

Overview

RCW-360 is a wireless temperature and humidity monitor with 2G/4G/Wi-Fi version. Its low power consumption features long standby time and it designs for multiple installation methods that can be widely used in various temperature and humidity monitoring scenes.

Features

- Real-time recording and monitoring of temperature and humidity
- App and Email alarms from Cloud; Audible and visual alarm from device
- Multiple installation and power supply methods, flexible to be installed anywhere
- Elitech Cloud supports parameter configurations, graph analysis, report export and etc
- Unlimited Cloud storage with additional local storage of 20,000 points if off-line
- 2G/4G versions support LBS (location-based service) positioning

Technical Specifications	RCW-360-TE	RCW-360-THE	RCW-360-TH
Power supply	5V/1A(DC)	5V/1A(DC)	5V/1A(DC)
Temperature measuring range	-40°C ~ +80°C	-40°C ~ +80°C	-20°C ~ +70°C
Temperature accuracy	±1.0°C(-25°C~0°C); ±0.5°C(0°C~40°C);±2°C(others)	±1.0°C(-25°C~0°C); ±0.5°C(0°C~40°C);±2°C(others)	±1.0°C(-25°C~0°C); ±0.5°C(0°C~40°C);±2°C(others)
Humidity measuring range	-/-	10%~95%	10%~95%
Humidity accuracy	-/-	±5%RH	±5%RH
sensor	STS31	SHT31	HDC1080
Logging interval	1 min to 24 hr.	1 min to 24 hr.	1 min to 24 hr.
Memory capacity	32,000 points for each channel(Max)	32,000 points for each channel(Max)	32,000 points for each channel(Max)
Communication interface	2G/4G/Wi-Fi(2.4G)	2G/4G/Wi-Fi(2.4G)	2G/4G/Wi-Fi(2.4G)
Alarm output	Led,Buzzer, APP, E-mail push	Led,Buzzer, APP, E-mail push	Led,Buzzer, APP, E-mail push
Battery	3.7V lithium battery	3.7V lithium battery	3.7V lithium battery
Battery life	Wi-Fi:30days (@25°C, Logging interval=10min) 2G:30days (@25°C, Logging interval=10min) 4G:15days (@25°C, Logging interval=10min)	Wi-Fi:30days (@25°C, Logging interval=10min) 2G:30days (@25°C, Logging interval=10min) 4G:15days (@25°C, Logging interval=10min)	Wi-Fi:30days (@25°C, Logging interval=10min) 2G:30days (@25°C, Logging interval=10min) 4G:15days (@25°C, Logging interval=10min)

IoT Data Logger
RCW-600WiFi

IoT

Software:
Elitech iCold
Page: 2-3

Overview

RCW-600WiFi is a real-time dual-channel temperature monitor based on Wi-Fi. With a large TFT screen and touch buttons, it supports parameter configuration on device remotely. The logger can be widely applied in various temperature monitoring scenes.

Features

- Check temperature data flexibly
- App,Email alarms from Cloud; Audio-visual warnings and alarms from device
- Large TFT screen for viewing data, touch buttons for on-site settings
- Offline data storage, automated Wi-Fi re-connection and data transmission
- Unlimited Cloud storage, parameter settings, graph analysis, report export, etc via Elitech
- 2 power supply modes, 5m dual temperature sensor
- Buttons parameter configuration
- 5m dual temperature sensors with high sensitivity
- Max 20,000 points of local storage
- Real-time visibility for cargo in-transit
- Rechargeable and reusable

Technical Specifications

Power supply	5V/1A(DC)
Temperature measuring range	-40°C ~ +80°C
Temperature accuracy	±0.5°C(-20°C~40°C); ±1°C(others)
Temperature sensor type	NTC
Sensor wire length	5m
Date uploading interval	1 min to 24 hr.
Battery	3.7V lithium battery
Battery life	4 hr.
Memory capacity	20,000 points
Alarm output	Led,Buzzer, APP, E-mail push,
Communication interface	Wi-Fi(2.4G)



IoT

IoT Data Logger
RCW-360 Plus



Software:
Elitech iCold
Page: 2-3

Overview

Elitech RCW-360Plus is a real-time temperature and humidity data logger featured with a large TFT screen with LBS, GPS and bluetooth printing function. It is widely used in the cold chain monitoring solutions, such as transportation and storage.

Features

- 3.7V 5000mAh rechargeable lithium battery, low power consumption and ultra-long standby time
- Free 4G SIM card available; LBS & GPS feature to monitor transportation track in real time
- Three alarm notification: SMS, E-mail & APP push
- Offline data collection up to 100,000 points, automatically upload after networking



RCW-360 Plus Technical Specifications

Model	RCW-360P-T	RCW-360P-TH	RCW-360P-THE	RCW-360P-THDE	RCW-360P-TDE
Sensor type	Internal:SHT31	Internal:SHT31	External:SHT31	External:SHT31	External:SHT31
Channel	Internal - Single T	Internal - Single T & Single H	External - Single T & Single H	External - dual T & dual H	External - dual T
Temperature measuring range	-20°C ~ 60°C	-20°C ~ 60°C	-40°C ~ 80°C	-40°C ~ 80°C	-40°C ~ 80°C
Humidity measuring range	/	0%RH ~ 100%RH	0%RH ~ 100%RH	0%RH ~ 100%RH	/
Temperature measuring range	±0.5°C	±0.5°C	±0.5°C	±0.5°C	±0.5°C
Humidity accuracy	/	±5%RH	±5%RH	±5%RH	/
Resolution	0.1°C	0.1°C /0.1%RH	0.1°C/0.1%RH	0.1°C/0.1%RH	0.1°C
Memory capacity	100000	100000	100000	100000	100000
Log interval	1min ~ 24h	1min ~ 24h	1min ~ 24h	1min ~ 24h	1min ~ 24h
Alarm type	Buzzer	Buzzer	Buzzer	Buzzer	Buzzer
Alarm mode	SMS APP E-mail	SMS APP E-mail	SMS APP E-mail	SMS APP E-mail	SMS APP E-mail
Battery	3.7V 5000mAh rechargeable lithium battery	3.7V 5000mAh rechargeable lithium battery	3.7V 5000mAh rechargeable lithium battery	3.7V 5000mAh rechargeable lithium battery	3.7V 5000mAh rechargeable lithium battery
Power supply	5V/2A (DC)	5V/2A (DC)	5V/2A (DC)	5V/2A (DC)	5V/2A (DC)
Screen	TFT	TFT	TFT	TFT	TFT
Communication interface	4G/WiFi	4G/WiFi	4G/WiFi	4G/WiFi	4G/WiFi
Waterproof	IP64	IP64	IP65	IP65	IP65

IoT

IoT Data Logger RCW-3000 Series

(Used with RCW-2100/2200 Sensors)



Software:
Elitech iCold
Page: 2-3

Overview

The wireless temperature and humidity monitoring system adopts advanced LORA communication technology, which is composed of wireless collector, wireless repeater, cloud platform, mobile APP, etc. The system uses various transmission technologies (LORA, GPRS, WIFI) to realize network monitoring of environmental temperature and humidity. The system can deploy wireless probes according to the location of the monitoring points, and select GPRS or WIFI to connect to the cloud platform according to the local environment. The wireless collector uploads data in the same wireless way, and the user views the data in real time through the browser or the intelligent terminal. The cloud platform can also be used for temperature and humidity data analysis, report export, historical data query, etc.

Features

- Wireless deployment, no need to punch wiring, easy installation
- Lora wireless communication, to meet the visual range of 1,000 meters of data transmission;
- Automatic networking, gateway agrees to upload data, support unified management of monitoring platform
- Multiple communication, 4G/ WiFi/wired version of the repeater free choice, to meet the communication requirements of different environments
- Remote temperature and humidity data monitoring and recording, data cloud storage, safe and reliable



RCW-3000



Technical Specifications		RCW-3000		
Data Update Interval		1-1440 Min (Default 1min)		
Maximum Transport Distance		≥1000 meters		
Maximum Adapter connected		≥100 Pieces		
Storage Capillarity		1 million points		
Data Storage Mode		Circular Storage		
Connection Type		USB Type-C (Rechargeable and data output)		
Power Input		5V/2A		
Battery Volume		5000mAh Rechargeable Lithium Battery		
Work Temperature Range		-10 C ~+50 C		
Indicator Light		Power、WIFI、4G、Ethernet、Lora		
		RCW-3200		
Model		Built-in Temp & Humi	External Temp & Humi	External Double Temp
Network		Lora	Lora	Lora
Sensor Type		Temp and humi integrated sensor	Temp and humi integrated sensor	Temp and humi integrated sensor
Temperature Range		-20°C ~ 50°C 0%RH~99%RH	-40°C~85°C 0%RH~99%RH	Temp: -40°C~85°C
Sensor Accuracy		±0.3°C(-20°C ~ 40°C), ±0.5°C	±0.3°C(-20°C ~ 40°C), ±0.5°C	±0.3°C(-20°C ~ 40°C), ±0.5°C
		Humi accuracy:±3%RH	Humi accuracy:±3%RH	Humi accuracy:±3%RH
Storage Cap		32000 Points	32000 Points	32000 Points
Connection		Micro USB (Recharge and data output)	Micro USB (Recharge and data output)	Micro USB (Recharge and data output)
Battery Volume		3200MAH Chargeable Lithium Battery	3200MAH Chargeable Lithium Battery	3200MAH Chargeable Lithium Battery
Power Adapter		5V/1A	5V/1A	5V/1A
Protection Class		Built-inIP65,External IP64	Built-inIP65,External IP64	Built-inIP65,External IP64
Product Size		110×70×18mm	110×70×18mm	110×70×18mm



IoT

IoT Data Logger
RCW-400A

36

Software:
Elitech iCold
Page: 2-3





Technical Specifications	
Power supply	12V/2.5A(DC)
Temperature measuring range	-40°C ~ +70°C
Temperature accuracy	±1.0°C(-25°C~0°C); ±0.5°C(0°C~40°C);±2°C(others)
Humidity measuring range	10%~95%
Humidity accuracy	±5%RH
Temperature sensor	NTC thermistor(Max 4 channels)
Humidity sensor	Honeywell (Max 2 channels)
Logging interval	1 min to 24 hr.
Memory capacity	20,000 points for each channel(Max)
Communication interface	3G,SMS
Alarm output	Led,Buzzer, APP, E-mail push, and relay alarm
Battery	3.7V lithium battery
Battery life	6 hr.

Indoor use only, prohibited from exposure to rain and sun



Technical Specifications	
Power supply	5V/1A(DC)
Temperature measuring range	-40°C ~ +80°C
Temperature accuracy	±0.5°C(-20°C~40°C); ±1°C(others)
Humidity measuring range	10%~95%
Humidity accuracy	±5%RH
Temperature sensor type	NTC
Humidity sensor type	Honeywell
Sensor wire length	5m
Date uploading interval	1 min to 24 hr.
Battery	3.7V lithium battery
Battery life	4 hr.
Memory capacity	20,000 points
Alarm output	Led,Buzzer, APP, E-mail push,
Communication interface	Wi-Fi(2.4G)

Software:
Elitech iCold
Page: 2-3



IoT Data Logger
RCW-800WiFi

37

IoT

Overview

RCW-800WiFi is a real-time temperature and humidity monitor based on Wi-Fi network. With a large TFT screen and touch buttons, it supports parameter configuration on device and remotely. The logger can be widely applied in various temperature monitoring scenes.

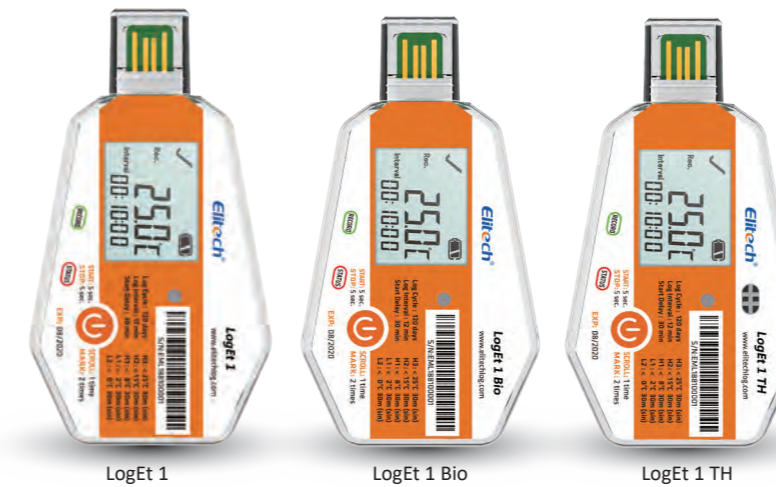
Features

- Check temperature and humidity data flexibly
- App and Email alarms from Cloud; Audio-visual warnings and alarms from device
- Large TFT screen for viewing various data, touch buttons for on-site settings
- Offline data storage, automated Wi-Fi re-connection and data transmission
- Unlimited Cloud storage, parameter settings, graph analysis, report export, etc via Elitech
- Two power supply modes, 5m temperature and humidity combined sensors

Data Logger Series

Single-Use Data Logger LogEt 1 Series

Single Use



LogEt 1

LogEt 1 Bio

LogEt 1 TH

Software:

ElitechLog

Page: 5-6


Online Web:
www.loget.i-elitech.com

Overview

LogEt 1 series are temperature/humidity data loggers with LCD display that can be used in pharmaceutical packages or cooler boxes. The loggers feature a light sensor that can be useful for determining violation door opening operations during transportation and verifying the safety and efficiency for pharmaceutical cold chain logistics.

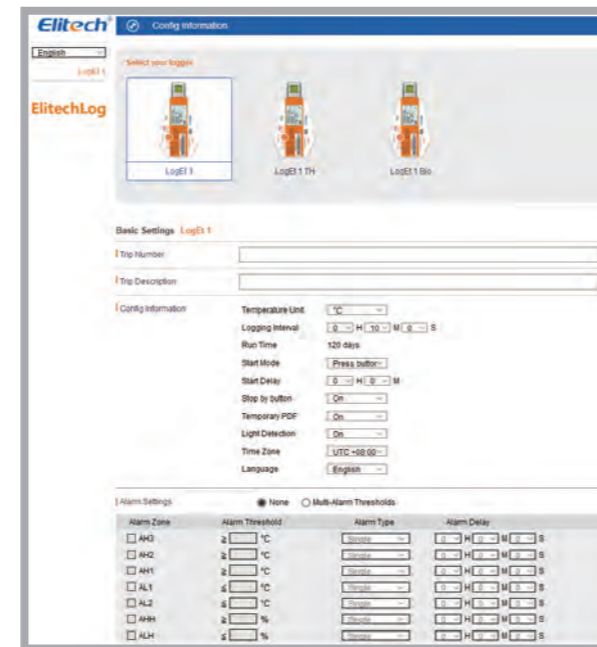
Features

- High-precision temperature/humidity sensor, accuracy heightened to $\pm 0.3\text{ C}$, 3%RH
- LCD screen for more powerful and intuitive indication
- 3. Configuration through free software ElitechLog and cloud platform Elitech iCold
- Light sensor to determine violation door opening operations during transportation
- Auto encrypted PDF report with password protection function
- Built-in USB port allows quick access to PCs and ElitechLog software
- Battery life up to 180 days, shelf life up to 2 years
- Up to IP67 waterproof grade(Except LogEt 1 TH)
- Complies with CE (EN12830), RoHS and FDA (21CFR)

ElitechLog Online Configuration Website

LogEt 1 series data loggers allow parameter configuration on webpage. Please visit our website <http://elitechlog.com/config> to download configuration files and save to data loggers to complete the process. They are easy and convenient for use. Following parameters can be configured online: logging interval, time zone, alarm range, temperature unit (C/ F), start mode, start delay, stop mode, illumination detection, trip number, trip description, password for PDF report, etc.

Online Configuration Website: <http://www.loget.i-elitech.com>



Technical Specifications	LogEt 1	LogEt 1 Bio	LogEt 1 TH
Recording Options	Single-Use	Single-Use	Single-Use
Temperature Range	-30 C to 70 C	-30 C to 70 C	-30 C to 70 C
Humidity Range	-	-	0-100% RH
Temperature Accuracy	$\pm 0.5\text{ C}$	$\pm 0.3\text{ C} (-20\text{ C}/+40\text{ C}); \pm 1.0\text{ C} (\text{other range})$	$\pm 0.3\text{ C} (-20\text{ C}/+40\text{ C}); \pm 0.5\text{ C} (\text{other range})$
Humidity Accuracy	-	-	$\pm 3\%RH (25\text{ C}, 20\%RH \text{ to } 80\%RH); \pm 5\%RH (\text{other range})$
Resolution	0.1 C	0.1 C	0.1 C, 0.1%RH
Data Storage Capacity	16,000 readings	16,000 readings	16,000 readings
Shelf Life/Battery	2 years ¹ /CR2450 button cell	2 years ¹ /CR2450 button cell	2 years ¹ /CR2450 button cell
Recording Interval	12 minutes(standard, others on request)	12 minutes(standard, others on request)	12 minutes(standard, others on request)
Recording Duration	up to 120 days ² (standard, others on request)	up to 120 days ² (standard, others on request)	up to 120 days ² (standard, others on request)
Reprogrammable	With free Elitech Win or MAC software	With free Elitech Win or MAC software	With free Elitech Win or MAC software
Startup Mode	Button or software	Button or software	Button or software
Stop Mode	Button, software or stop when full	Button, software or stop when full	Button, software or stop when full
Protection Class	IP67	IP67	NONE
Certifications	FDA EN12830, CE, RoHS	FDA EN12830, CE, RoHS	FDA EN12830, CE, RoHS

1. Depending on optimal storage conditions(15 C to 23 C /45% to 75% RH)

2. Depending on application temperature(very low/ high temperatures may shorten it)

1. Depending on optimal storage conditions(15 C to 23 C /45% to 75% RH)

2. Depending on application temperature(very low/ high temperatures may shorten it)

1. Depending on optimal storage conditions(15 C to 23 C /45% to 75% RH)

2. Depending on application temperature(very low/ high temperatures may shorten it)

Single Use

Single-Use indicators
Ti Series



Overview

This is a temperature tag with NFC communication function, which is mainly used in application scenarios such as blood, vaccines, biological preparations, biological medicines, cold chain foods, and precision instruments. The product is light weight, thin and compact, and the start-stop operation with break-tab is simple and reliable. It is suitable especially for the smallest packaging products. It supports any handheld devices with NFC function, such as a mobile phone to retrieve key data during temperature monitoring, and long battery life to ensure data recording during the entire monitoring process.

Technical Specifications	TI-15	TI-25
Memory	/	3800(MAX)
Teasuring Range	-30°C~60°C	-30°C~60°C
Accuracy	± 0.5°C(-20°C~40°C), ±1°C(others)	± 0.5°C(-20°C~40°C), ±1°C(others)
Sensor	Built-in NTC	Built-in NTC
Sampling Interval	1min(standard,others on request)	1min(standard,others on request)
Recording Interval	nonsupport	12h(standard,others on request)
Start Delay	30 min(standard,others on request)	30 min(standard,others on request)
Start Mode	Break to start	Break to start
Stop Mode	Break to stop	Break to stop
Alarm threshold	Optional, up to 6 points	Optional, upto 6 points
Data Interface	NFC	NFC
Battery life	2 years(normal temperature)	3 years(normal temperature)
Shelf life/Battery	3 years/CR1620 lithium battery	4 years/CR2032 lithium battery
Report Generation	PDF/Excel report	PDF/Excel report
Protection Class	IP54	IP54
Weight	Approx. 0.5g	Approx. 1.1g
Dimensions	34mm * 48mm * 4.5mm (L * W * H)	40mm*57mm *5.5mm (L * W * H)



Overview

RC-17/RC-17N is mainly used for temperature monitoring and recording in food and medicine storage and transportation environment, such as refrigerated bags, refrigerated trucks, containers, etc. This product is connected to the computer through USB, and the recorded data is directly output as PDF report; Built-in temperature probe, powered by CR2450 wide temperature lithium battery, waterproof grade up to IP67. Products come with a bar code.

RC-17N supports any handheld devices with NFC function, such as a mobile phone to retrieve key data during temperature monitoring.

Single-Use Data Logger
RC-17/RC-17N

Multi Use

Technical Specifications	
Temperature Range	-30°C ~ 70°C
Resolution	0.1°C
Storage Temperature	-30°C ~ 70°C
Measurement Accuracy	0.5°C/0.9°F (-20°C ~ 40°C) ; 1°C/1.8°F (Other)
Sensor	Built-in NTC
Storage capacity	16000points (Max)
Logging life	6,15,30,60,90,120,180days (customized)
Alarm Type	single (Sin) , accumulative (Cum)
Data Transport	USB 2.0/ NFC
Report Type	PDF Report
Power Type	Built-in CR2450 lithium battery
Battery Life	2 years
Protection Class	IP67

Single Use

Single-Use Data Logger RC-18/RC-19

Software: ElitechLog
Page: 5-6



Overview

RC-18 is Elitech conventional temperature data logger with automatic PDF report generation. It can provide reliable temperature recordings of food and pharmaceuticals during warehouse storage, distribution and transportation in order to ensure safety, security and efficiency.

RC-19 is the upgraded version with password protection, multiple alarm thresholds functions and allows to re-configure parameters.

Features

RC-18

- Built-in USB port allows quick access to PCs and ElitechLog software
- Double click START button to quickly mark events for further references
- Up to 16,000 points memory capacity
- Battery life up to 180 days, shelf life up to 2 years
- Up to IP67 waterproof grade
- LED indicator for over temperature alarms
- Compliance with CE (EN12830), RoHS and FDA (21CFR)

RC-19

- Re-configurable, allows to customize parameters
- Auto encrypted PDF report with password protection function
- Up to 5 alarm thresholds, suitable for temperature excursion monitoring on temperature-sensitive goods as food, pharmaceuticals, etc



RC-18

RC-19

Technical Specifications	
Recording Options	Single-Use
Temperature Range	-30 °C to 70 °C
Temperature Accuracy	±0.5 °C (-20 °C/+40 °C); ±1.0 °C (other range)
Temperature Resolution	0.1 °C
Data Storage Capacity	16,000 readings
Shelf Life/Battery	2 years'/CR2450 button cell
Recording Interval	12 minutes(standard, others on request)
Recording Duration	up to 120 days ² (standard, others on request)
Report Generation	Automatic PDF report
Password Protection	None (RC-18) /Optional on request (RC-19)
Alarm Configuration	Optional, only 2 points (RC-18) / up to 5 points (RC-19)
Reprogrammable	With free Elitech Win or MAC software
Startup Mode	Button or software
Stop Mode	Button, software or stop when full
Accessories incl.	Shipping Documents, Certificate, (RC-19-Reprogram Label and Seal-Bag)
Protection Class	IP67
Certifications	FDA EN12830, CE, RoHS

1. Depending on optimal storage conditions(15 °C to 23 °C /45% to 75% RH)

2. Depending on application temperature(very low/ high temperatures may shorten it)



TI-30



TI-40

Features TI-30/40

- Customizable temperature measuring ranges, cost-effectiveness
- LCD display with powerful indications on temperatures, alarms and statistics
- Battery life up to 180 days, shelf life up to 4 years
- Conform to WHO requirements for photocopy
- Compliant with WHO
- Compliance with CE (EN12830), RoHS and FDA (21CFR)

Technical Specifications	Ti-30	Ti-40
Temperature Range	-30°C ~ 70°C	-30°C ~ 70°C
Temperature Accuracy	±0.5°C(-20°C/+40°C); ±1°C(other range)	±0.5°C(-20°C/+40°C); ±1°C(other range)
Memory	/	/
Shelf Life/Battery	2 years'/CR2450 button cell	2 years'/CR2450 button cell
Recording Interval	5 minutes(standard)	5 minutes(standard)
Recording Duration	up to 180 days ² (standard, others on request)	up to 180 days ² (standard, others on request)
Alarm Configuration	Optional, up to 5 points	Optional, up to 5 points
Startup Mode	Button	Button
Stop Mode	Button	Button
Protection Class	IP67	IP67
Certifications	FDA EN12830, CE, RoHS	FDA EN12830, CE, RoHS

1. Depending on optimal storage conditions(15 °C to 23 °C /45% to 75% RH)

2. Depending on application temperature(very low/ high temperatures may shorten it)

1. Depending on optimal storage conditions(15 °C to 23 °C /45% to 75% RH)

2. Depending on application temperature(very low/ high temperatures may shorten it)

1. Depending on optimal storage conditions(15 °C to 23 °C /45% to 75% RH)

2. Depending on application temperature(very low/ high temperatures may shorten it)

1. Depending on optimal storage conditions(15 °C to 23 °C /45% to 75% RH)

2. Depending on application temperature(very low/ high temperatures may shorten it)

Single-Use indicators Ti Series

Single Use

Overview

Ti series are temperature indicators as the low-cost solutions for temperature monitoring. Easy to operate and support factory customization in temperature measuring ranges and logging intervals.

Multi-Use Data Logger Tlog Series

Software:
ElitechLog
Page: 5-6



Features

- **Safe and Secure**
The software is FDA certified.
- **High-Precision Sensor**
Imported Sensirion sensors with precise original calibration.
- **Nanoscale Packaging Technology**
PTFE membrane adopted for protecting the sensor from contamination by liquids and dust while ensuring sensor performance.
- **Brand New Air Chamber Design**
Air flow based air chamber allows for the best possible thermal coupling to the environment and rapid sensing of the actual ambient temperature.
- **Button Sunken**
Elimination of misoperation caused by cargo jolts during transportation.
- **Multiple Scenario Application**
Data transmission by USB and Bluetooth to meet different operation needs.
Suitable for various environmental demands including incubator, cool cabinets, cryogenic refrigerator, dry ice and liquid nitrogen.

Technical Specifications

Model	Tlog 100	Tlog 100E	Tlog 100EC	Tlog 100EL	Tlog 100H	Tlog 100EH
Sensor Type	Internal Temperature	External Temperature	External Cryogenic	External Cryogenic	Internal Temperature and Humidity	External Temperature and Humidity
Temperature Range	-30 °C ~ 70 °C	-40 °C ~ 85 °C	-85 °C ~ 150 °C	-196 °C ~ 150 °C	-30 °C ~ 70 °C	-40 °C ~ 85 °C
Humidity Range	/	/	/	/	0 ~ 100% RH	0 ~ 100% RH
Data Interface	USB	USB	USB	USB	USB	USB
Accuracy	Temperature: ±0.3 °C (-20 °C ~ 40 °C); ±0.5 °C (-50 °C ~ 85 °C); ±1 °C (-100 °C ~ 150 °C); ±2 °C (others) ±3%RH (25 °C : 20%RH ~ 80%RH), ±5%RH(others)					
Resolution	Temperature: 0.1 °C; Humidity: 0.1%RH					
Memory	32000 points (MAX)					
Logging Interval	10s ~ 24h					
Start Mode	Press button or use software					
Stop Mode	Press button, use software, or auto stop					
Alarm Mode	Single, cumulative					
Report Type	PDF format					
Battery	CR2450 3.0V wide-temperature button cell					
Battery Life	2 years for storage and use; Cumulatively 180 days at 10 min logging interval and 25 °C (Bluetooth not on)					
Protection Level	IP65					



Multi-Use Data Logger RC-51 Series

Overview

RC-51 series are Elitech conventional USB temperature/humidity data loggers. Its special pen style design features with high protection class of IP67 rating.

Features

- Internal temperature/humidity sensor, accuracy up to ±0.5 °C /3%RH
- Auto encrypted PDF report with password protection function
- Built-in USB port allows quick access to PCs and ElitechLog software
- Powerful and intuitive indication with LCD screen and dual LED indicators
- Up to 32,000 data points memory capacity for temperature/humidity
- Up to 7 alarm thresholds configurable
- Compliance with CE (EN12830), RoHS and FDA (21CFR)



Technical Specifications	RC-51	RC-51H
Recording Options	Multi-Use	Multi-Use
Temperature Range	-30 °C to 70 °C	-30 °C to 70 °C
Humidity Range	-	10% ~ 95%
Temperature Accuracy	±0.5 °C (-20 °C /+40 °C); ±1.0 °C (other range)	±0.5 °C (-20 °C /+40 °C); ±1.0 °C (other range)
Humidity Accuracy	-	±3%RH(25 °C ,20%RH to 90%RH), ±5%RH(other range)
Resolution	0.1 °C	0.1 °C ,0.1%RH
Data Storage Capacity	32,000 readings	32,000 readings
Shelf Life/Battery	2 years/ER14250 button cell	2 years/ER14250 button cell
Recording Interval	15 minutes(standard, others on request)	15 minutes(standard, others on request)
Validation Certificate	Hardcopy	Hardcopy
Report Generation	Automatic PDF report	Automatic PDF report
Alarm Configuration	Optional, up to 5 points	Optional, up to 5 points
Reprogrammable	With free Elitech Win or MAC software	With free Elitech Win or MAC software
Startup Mode	Button or software	Button or software
Stop Mode	Button, software or stop when full	Button, software or stop when full
Protection Class	IP67	-
Certifications	FDA EN12830, CE, RoHS	FDA EN12830, CE, RoHS

Multi-Use Data Logger

LogEt 8 Life Science Series

Overview

The LogEt 8 Life Science Series are ultra-high precision temperature and humidity data loggers that can be used for thoroughly monitoring the quality and safety of sensitive goods' during transportation or storage, which helps users make decisions to accept or reject goods immediately.

Features

- High-precision temperature/humidity sensor, accuracy heightened to $\pm 0.3\text{ }^{\circ}\text{C}$, $\pm 3\%\text{RH}$
- Internal/external sensor with multiple combinations, applicable to various scenarios
- Software-free, online website configuration for various parameters
- Auto encrypted PDF report with password protection function
- Built-in USB port allows quick access to PCs and ElitechLog software
- Up to 7 alarm thresholds configurable
- IP65 rating
- 2-year lifespan of battery in Normal-temperature
- Compliance with CE (EN12830), RoHS and FDA (21CFR)

Technical Specifications

	LogEt 8	LogEt 8TH	LogEt 8 TE	LogEt 8THE	LogEt 8 PTE	LogEt 8 UTE
Recording Options	Multi-Use	Multi-Use	Multi-Use	Multi-Use	Multi-Use	Multi-Use
Temperature Range	-30 °C to 70 °C	-30 °C to 70 °C	-40 °C to 85 °C	-40 °C to 85 °C	-85 °C to 150 °C	-196 °C to 150 °C
Humidity Range	—	0-100% RH	—	0-100% RH	—	—
Temperature Accuracy	$\pm 0.3\text{ }^{\circ}\text{C}$ (all range)	$\pm 0.3\text{ }^{\circ}\text{C}$ (-20 °C/+40 °C); $\pm 0.5\text{ }^{\circ}\text{C}$ (other range)	$\pm 0.3\text{ }^{\circ}\text{C}$ (-20 °C/+40 °C); $\pm 0.5\text{ }^{\circ}\text{C}$ (other range)	$\pm 0.3\text{ }^{\circ}\text{C}$ (-20 °C/+40 °C); $\pm 0.5\text{ }^{\circ}\text{C}$ (other range)	$\pm 0.3\text{ }^{\circ}\text{C}$ (-20 °C/+40 °C); $\pm 0.5\text{ }^{\circ}\text{C}$ (-50 °C/+85 °C); $\pm 1\text{ }^{\circ}\text{C}$ (other range)	$\pm 0.3\text{ }^{\circ}\text{C}$ (-20 °C/+40 °C); $\pm 0.5\text{ }^{\circ}\text{C}$ (-50 °C/+85 °C); $\pm 1\text{ }^{\circ}\text{C}$ (-100 °C/+150 °C) $\pm 2\text{ }^{\circ}\text{C}$ (other range)
Humidity Accuracy	—	$\pm 3\%\text{RH}$ (25 °C, 20%RH to 80%RH), $\pm 5\%\text{RH}$ (other range)	—	$\pm 3\%\text{RH}$ (25 °C, 20%RH to 90%RH), $\pm 5\%\text{RH}$ (other range)	—	—
Resolution	0.1 °C	0.1 °C, 0.1%RH	0.1 °C	0.1 °C, 0.1%RH	0.1 °C	0.1 °C
Data Storage Capacity	16,000 readings					
Shelf Life/Battery	2 years ¹ /ER14250 3.6V lithium battery					
Recording Interval	10 minutes(standard, others on request)					
Software	PDF /ElitechLog Win or Mac (latest version)					
Report Generation	Automatic PDF report					
Password Protection	Optional on request					
Alarm Configuration	Optional, up to 5 points					
Reprogrammable	With free Elitech Win or MAC software					
Startup Mode	Button or software					
Stop Mode	Button, software or stop when full					
Protection Class	IP65					
Certifications	FDA EN12830, CE, RoHS					

1. Depending on optimal storage conditions(15 °C to 23 °C/45% to 75% RH)



Software:
ElitechLog
Page: 5-6



Multi-Use Data Logger

LogEt 8 BLE

Technical Specifications

Recording Options	Multi-Use
Temperature Range	-30 °C to 70 °C
Temperature Accuracy	$\pm 0.3\text{ }^{\circ}\text{C}$ (all range)
Temperature Resolution	0.1 °C
Data Storage Capacity	16,000 readings
Shelf Life/Battery	2 years ¹ /ER14250 3.6V lithium battery
Recording Interval	10 minutes(standard, others on request)
Software	PDF /ElitechLog Win or Mac (latest version)
Report Generation	Automatic PDF report
Password Protection	Optional on request
Connection Interface	USB 2.0, A-Type, bluetooth
Alarm Configuration	Optional, up to 5 points
Reprogrammable	Elitech APP & Elitechlog
Startup Mode	Button or software
Stop Mode	Button, software or stop when full
Protection Class	IP65
Certifications	FDA EN12830, CE, RoHS

1. Depending on optimal storage conditions(15 °C to 23 °C/45% to 75% RH)

Software:

ElitechLog
Page: 5-6



Overview

The LogEt 8 BLE temperature data logger deploys Bluetooth® Low Energy (BLE) technology that allows remote access and manages data logger outside the package or vehicle through Elitech App.

Functions

- Bluetooth® access data logger outside the package anytime anywhere, no pairing required
- Auto encrypted PDF report with password protection function
- Built-in USB port allows quick access to PCs and ElitechLog software
- Multiple configuration, downloading, management and sharing via Elitech app (iOS/Android)
- Unlimited storage on Elitech Cloud
- Compliance with CE (EN12830), RoHS, BQB and FDA (21CFR)

Single Use

Single-Use Data Logger

LogEt 6

Software: ElitechLog
Page: 5-6



Overview

LogEt 6 is a temperature data logger with LCD screen and generated PDF report automatically. It can provide reliable and visible temperature recordings of food and pharmaceuticals during warehouse storage, distribution and transportation in order to ensure safety, security and efficiency.

Features

- LCD display with powerful and clear indications on status, alarms and statistics
- Auto encrypted PDF report with password protection function
- Built-in USB port allows quick access to PCs and ElitechLog software
- Double click START button to quickly mark events for further references
- Up to 5 alarm thresholds, suitable for temperature excursion monitoring on temperature-sensitive goods as food, pharmaceuticals, etc
- Up to 16,000 points memory capacity
- Battery life up to 1 year, shelf life up to 2 years
- Compliance with CE (EN12830), RoHS and FDA (21CFR)



Technical Specifications

Recording Options	Single-Use
Temperature Range	-30 C to 70 C
Temperature Accuracy	±0.5 C (-20 C/+40 C);±1.0 C (other range)
Temperature Resolution	0.1 C
Data Storage Capacity	16,000 readings
Shelf Life/Battery	2 years/ER14250 3.6V lithium battery
Recording Interval	10 minutes(standard, others on request)
Recording Duration	up to 110 days ² (standard, others on request)
Software	PDF /ElitechLog Win or Mac (latest version)
Report Generation	Automatic PDF report
Password Protection	Optional on request
Alarm Configuration	Optional, up to 5 points
Reprogrammable	With free Elitech Win or MAC software
Startup Mode	Button or software
Stop Mode	Button, software or stop when full
Protection Class	IP65
Certifications	FDA EN12830, CE, RoHS

1. Depending on optimal storage conditions(15 C to 23 C /45% to 75% RH)
2. Depending on application temperature(very low/ high temperatures may shorten it)



Features

- Internal temperature sensor, accuracy up to ±0.5 C
- Built-in USB port allows quick access to PCs and ElitechLog software
- LCD display with powerful indications on status and statistics
- Up to 32,000 points memory capacity
- IP67 rating
- Compliance with CE (EN12830), RoHS and FDA (21CFR)

RC-5+ Upgraded Functions:

- Auto encrypted PDF report with password protection function
- Quick restart without re-configuration
- Up to 5 alarm thresholds configurable
- External temperature sensors (optional)
- Compliance with CE(EN12830), RoHS, DO-160G and FDA (21CFR)

Multi-Use Data Logger

RC-5+ Series

Multi Use

Software: ElitechLog
Page: 5-6



Overview

RC-5 is Elitech conventional USB temperature data logger that is widely used all over the world in various fields. RC-5+ is the upgraded version with automatic generation of PDF report, repeat start functions and etc.

Technical Specifications

Recording Options	Multi-Use
Temperature Range	-30 C to 70 C
Temperature Accuracy	±0.5 C (-20 C/+40 C);±1.0 C (other range)
Temperature Resolution	0.1 C
Data Storage Capacity	32,000 readings
Shelf Life/Battery	1 year ¹ /CR2032 button cell (RC-5+)
Recording Interval	3 minutes(standard) (RC-5+)
Validation Certificate	Hardcopy
Report Generation	Automatic PDF report (RC-5+)
Password Protection	Optional on request
Alarm Configuration	Optional, up to 5 points (RC-5+)
Reprogrammable	With free Elitech Win or MAC software
Startup Mode	Button or software
Stop Mode	Button, software or stop when full
Protection Class	IP67
Certifications	FDA EN12830, CE, RoHS

1. Depending on optimal storage conditions(15 C to 23 C /45% to 75% RH)

Multi Use

Multi-Use Data Logger GSP-6/6G/8

Software:
ElitechLog
Page: 5-6



GSP-6

GSP-6G

GSP-8

Overview

GSP-6 series are temperature and humidity data loggers featured with large display and optional glycol bottle. Its dual probe accessories support multiple combination options of temperature and humidity. Employs with multiple alerting methods and shorten logging intervals automatically, it avoids over-limits.

Elitech outstanding ElitechLog software services on PC by setting 2 temperature/humidity alarm thresholds, viewing temperature/humidity history data, exporting detailed data report, etc.

Technical Specifications	GSP-6/6G	GSP-8
Recording Options	Multi-Use	Multi-Use
Temperature Range	-40 C~85 C	-20 C~60 C (internal sensor); -40 C~85 C (external probe)
Humidity Range	0~100% RH	0~100% RH
Temperature Accuracy	±0.5 C (-20 C/+40 C); ±1.0 C (other range)	±0.3 C (-20 C/+40 C); ±0.5 C (others)
Humidity Accuracy	±3%RH(25 C,20%RH to 90%RH); ±5%RH(other range)	±3%RH(25 C,20%RH to 90%RH); ±5%RH(others)
Resolution	0.1 C,0.1%RH	0.1 C, 0.1%RH
Data Storage Capacity	16,000 readings	100,000 readings
Shelf Life/Battery	2 years' ER14505	Rechargeable 18650 lithium battery
Recording Interval	15 minutes(standard, others on request)	15 minutes(standard, others on request)
Alarm Configuration	Optional, only 2 points	Optional, up to 5 points
Reprogrammable	With free Elitech Win or MAC software	Auto PDF report,PDF/EXCEL/TXT by ElitechLog software
Stop Mode	Button, software or stop when full	Button,software or stop when full
Certifications	FDA EN12830, CE, RoHS	FDA EN12830, CE, RoHS

Features

- Internal temperature and humidity sensor, accuracy up to ±0.5 C, ±3%RH
- Built-in USB port allows quick access to PCs and ElitechLog software
- Large LCD display convenient for data view from a distance
- Various alerting modes as Audio-visual alarm, screen indicator alarm and etc
- Shorten logging interval automatically when temperature and humidity alarm triggered
- Optional glycol bottle as thermal buffer could reflect more accurate and stable readings
- Powered by battery or USB connection
- Compliance with CE (EN12830), RoHS and FDA (21CFR)

Software:

ElitechLog

Page: 5-6



Technical Specifications	RC-4HC	RC-4
Recording Options	Multi-Use	Multi-Use
Temperature Range	-30 C to 60 C (Internal sensor) -40 C to 85 C (optional external sensor)	-30 C to 60 C (Internal sensor) -40 C to 85 C (optional external sensor)
Humidity Range	0 ~ 100% RH	-
Temperature Accuracy	±0.5 C (-20 C/+40 C) ±1.0 C (other range)	±0.5 C (-20 C/+40 C); ±1.0 C (other range)
Humidity Accuracy	±3%RH(25 C,20%RH to 90%RH) ±5%RH(other range)	-
Resolution	0.1 C,0.1%RH	0.1 C
Data Storage Capacity	16,000 readings	16,000 readings
Shelf Life/Battery	1 year'/CR2450 button cell	1 year'/CR2450 button cell
Recording Interval	15 minutes(standard, others on request)	15 minutes(standard, others on request)
Report Generation	PDF&Excel report by Elitech software	PDF&Excel report by Elitech software
Alarm Configuration	Optional, only 2 points	Optional, only 2 points
Reprogrammable	With free Elitech Win or MAC software	With free Elitech Win or MAC software
Startup Mode	Button	Button
Stop Mode	Button, software or stop when full	Button, software or stop when full
Certifications	FDA EN12830, CE, RoHS	FDA EN12830, CE, RoHS

RC-4

1. Depending on optimal storage conditions(15 C to 23 C/45% to 75% RH)

RC-4HC

1. Depending on optimal storage conditions(15 C to 23 C/45% to 75% RH)

Multi-Use Data Logger RC-4 Series

Multi Use



RC-4

RC-4HC

Overview

RC-4 series are Elitech conventional temperature/humidity data loggers, support external temperature sensor and buzzer alarms. This series is world-wide remote access to various applications like life sciences, food, shipping, logistics, and pharmaceutical industries.

Features

- Internal temperature/humidity sensor, accuracy up to ±0.5 C, ±3%RH
- Double alarm thresholds configurable with buzzer alarm notification
- USB cable included, no reader required to connect with PC and ElitechLog software
- External temperature sensors applicable to various scenarios (optional)
- Wall-mounted in various locations with multiple mounting hardware(optional)
- Compliance with CE (EN12830), RoHS and FDA (21CFR)