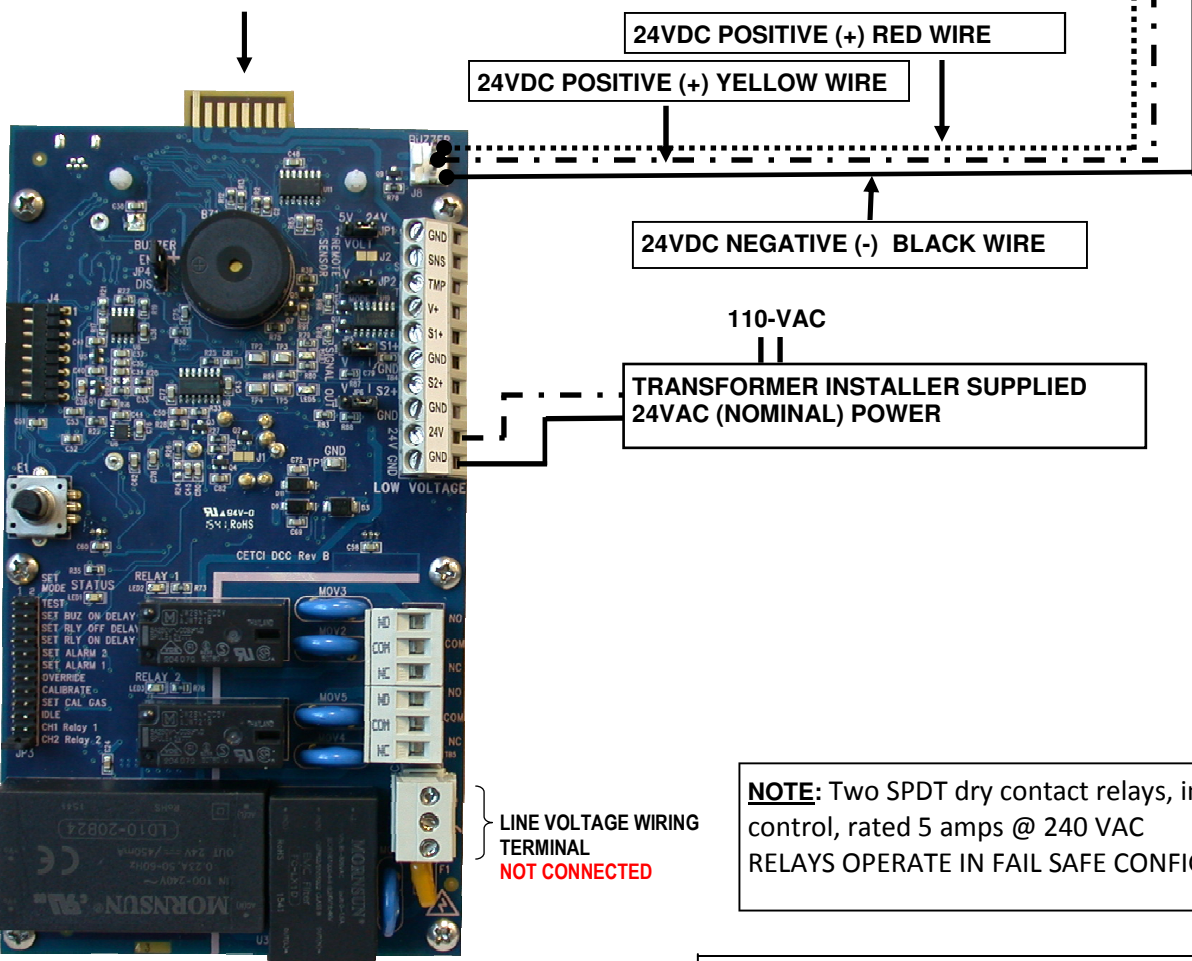


DCC & RSH-24V REMOTE STROBE & HORN COMBO (24VAC)

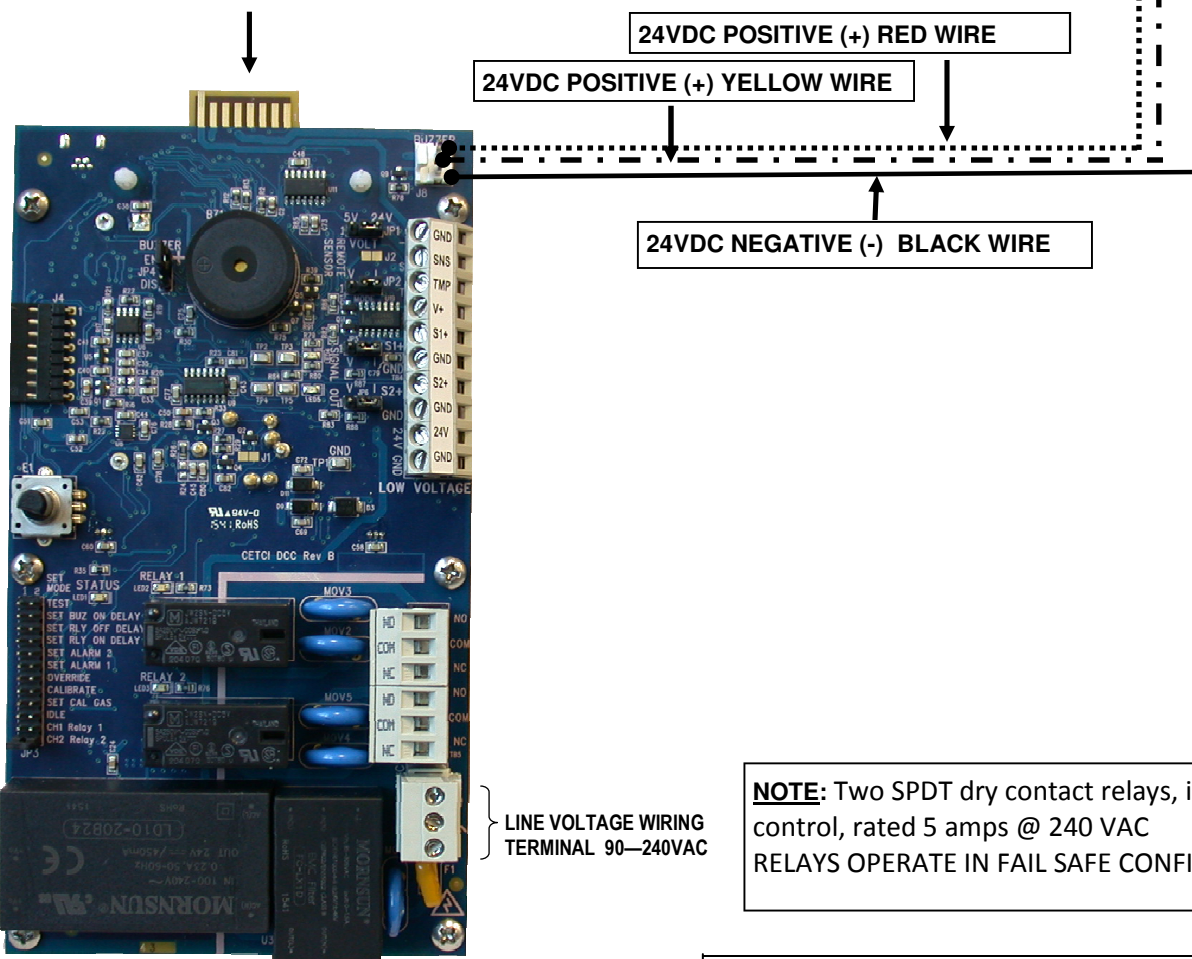


**NOTE:** Two SPDT dry contact relays, including VFD control, rated 5 amps @ 240 VAC  
RELAYS OPERATE IN FAIL SAFE CONFIGURATION.

**NOTE:** DO NOT RUN LINE VOLTAGE AND LOW VOLTAGE WIRES IN THE SAME CONDUIT.

CRITICAL ENVIRONMENT TECHNOLOGIES CANADA INC.	
NAME:	WIRING CONNECTIONS—24 VAC POWER SUPPLY
MODEL:	All DCC Models with RSH-24V
DATE:	November 17, 2016

DCC & RSH-24V REMOTE STROBE & HORN COMBO (LINE VOLTAGE)



**NOTE:** Two SPDT dry contact relays, including VFD control, rated 5 amps @ 240 VAC  
RELAYS OPERATE IN FAIL SAFE CONFIGURATION.

**NOTE:** DO NOT RUN LINE VOLTAGE AND LOW VOLTAGE WIRES IN THE SAME CONDUIT.

<b>CRITICAL ENVIRONMENT TECHNOLOGIES CANADA INC.</b>	
<b>NAME:</b>	WIRING CONNECTIONS - LINE VOLTAGE SUPPLY
<b>MODEL:</b>	All DCC Models with RSH-24V
<b>DATE:</b>	November 17, 2016