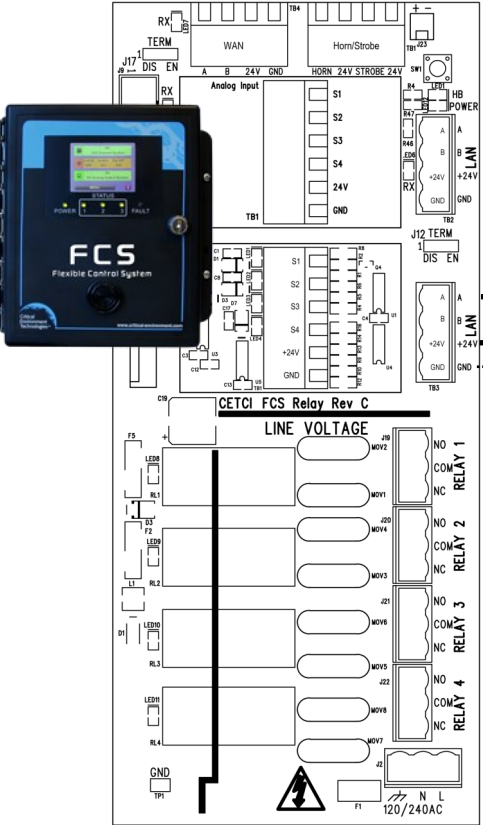


**A**  
**B**  
**X**  
**24V**  
**GND**

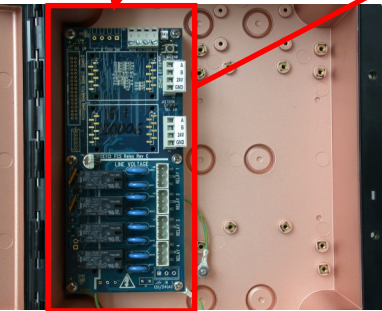
**BACNET CONTROLLER  
(INSTALLER SUPPLIED)**

24V not connected on board



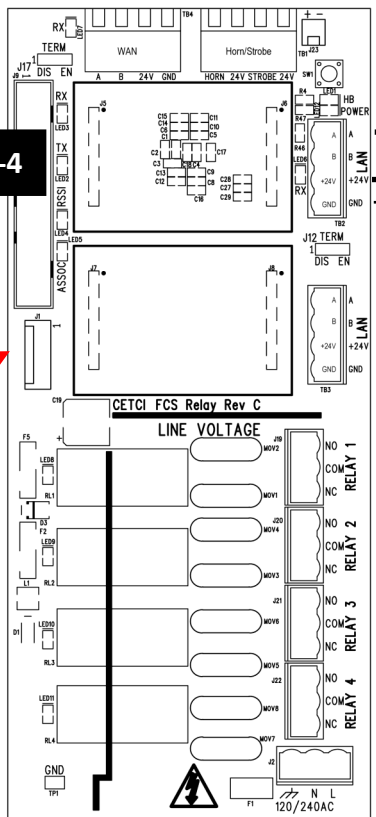
**L**  
**N**  
**GND**

**INSTALLER SUPPLIED  
LINE VOLTAGE  
(90-240 VAC, 50-60 HZ)**



RELAYS OPERATE IN A  
"FAIL SAFE" CONFIGURATION.

**RLY-4**



**CRITICAL ENVIRONMENT TECHNOLOGIES CANADA**  
www.critical-environment.com

**FCS-B BACNET® CONTROLLER WITH OPTIONS  
-AIAO WITH REMOTE RLY-4 WIRING CONNECTION  
DRAWING**

REV-A June 29, 2017